

Safety Climate Tool

Safety culture, or the way safety is perceived, valued and prioritised in an organisation, not only has an obvious and direct effect on accident rates, it also impacts on productivity, reliability, competitiveness and even employee morale.

Organisations with an effective safety culture have realised that by making an asset of safety rather than a risk, brings positive, demonstrable results throughout their business.

Learning about the safety culture within your organisation has many benefits, the information generated from measuring safety climate can:

- Assist with the proactive management of health and safety
- Raise the profile of health and safety within your organisation
- Provide a base line measure to help you assess where to invest resource

The Health & Safety Laboratory (HSL) Safety Climate Tool measures the perceptions of the workforce on health and safety issues, offering a

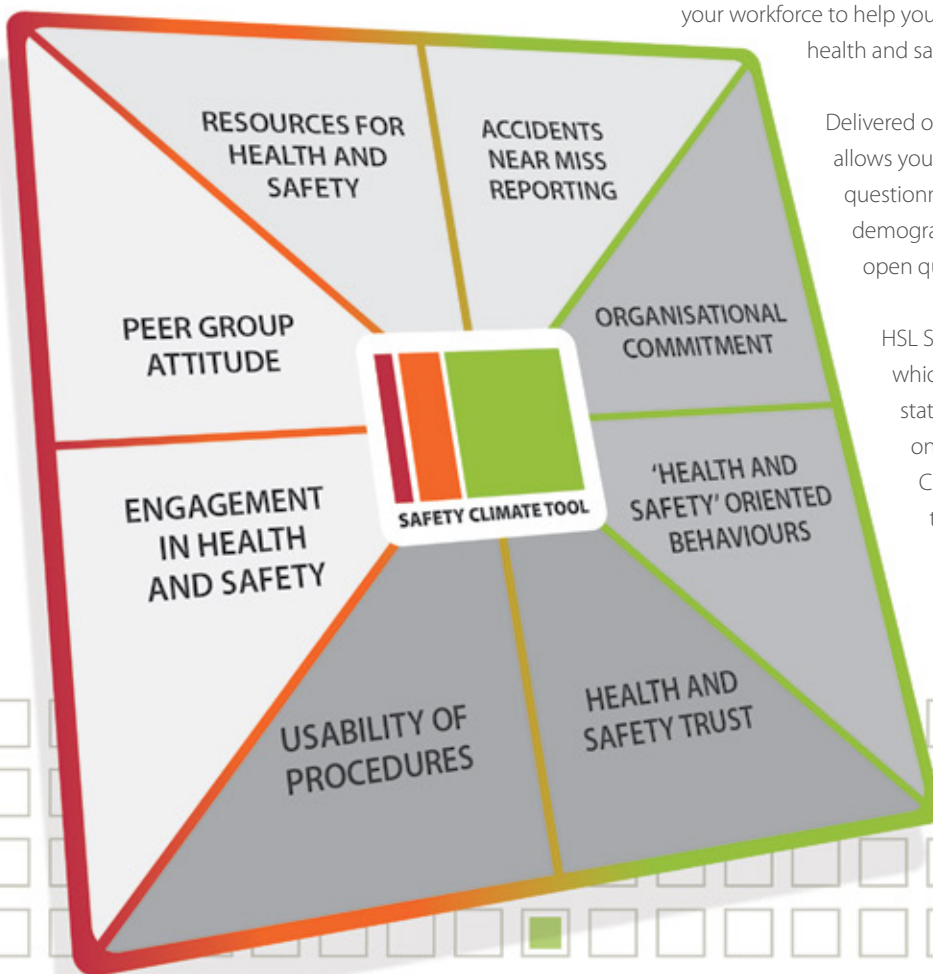
unique insight into the safety culture within an organisation. It can be applied across industries of all sizes, from SME to large complex organisations. Multi-site companies can also use it to look at the strengths and weaknesses of different sites or business units.

The HSL has developed the Safety Climate Tool to enable you to gain invaluable insight into the safety culture of your organisation and take the steps needed to improve it.

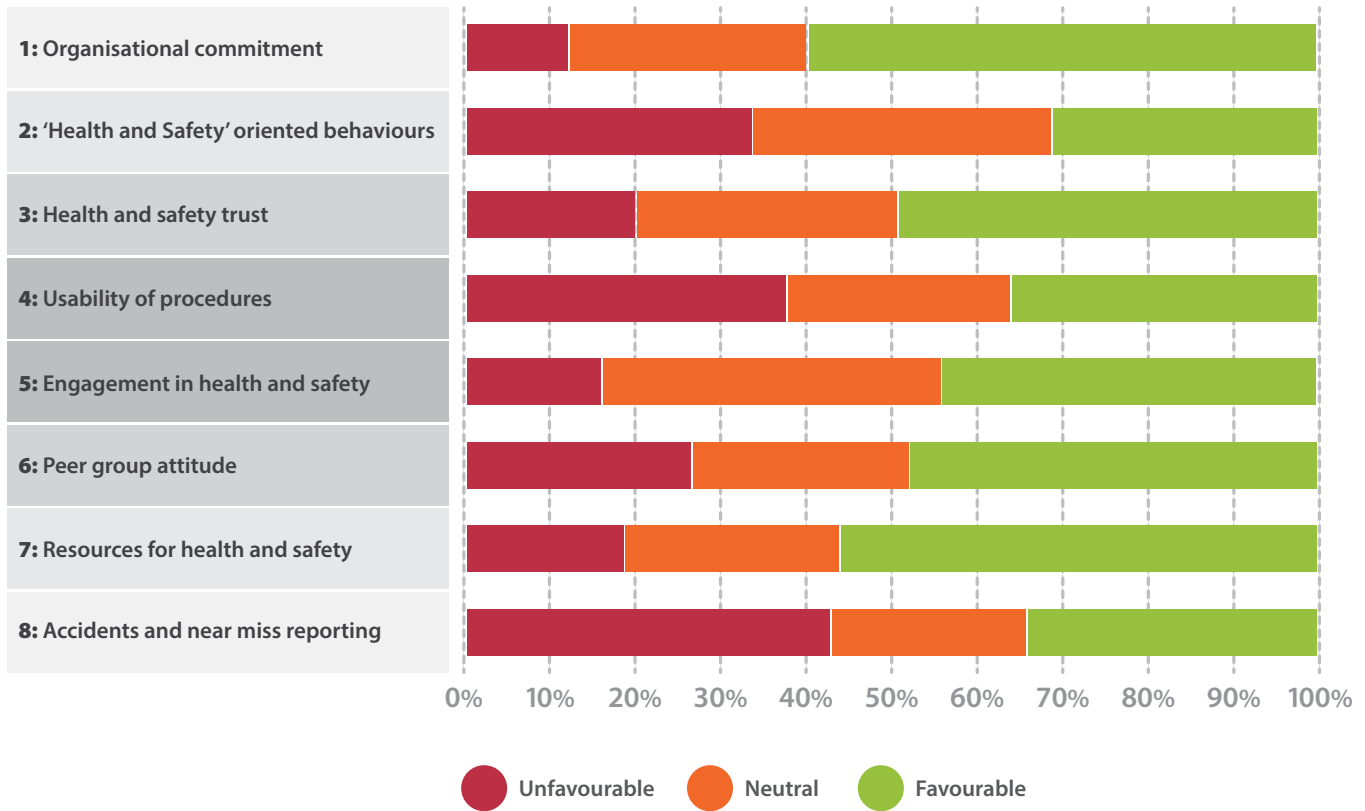
It focuses on understanding the attitudes, values and perceptions of your workforce to help you evaluate how effective your occupational health and safety management is.

Delivered online, the HSL Safety Climate Tool allows you to produce a customised employee questionnaire which allows for up to nine demographic questions and an additional six open questions.

HSL Safety Climate Tool uses eight key factors, which have been mapped around 40 statements to measure employee's attitudes on health and safety issues. HSL Safety Climate Tool automatically analyses the data to produce a series of charts and allows detailed filtering.



Summary of all responses by factor



Data from Safety Climate Tool

The HSL Safety Climate Tool offers powerful reporting capabilities for analysing your organisations safety culture. The data can be viewed in a variety of automated reports and charts. The example above shows the percentage of favourable, neutral and unfavourable responses for each of the eight factors, highlighting your organisation's strengths and opportunities for improvement.

Data can also be viewed in tables, filtered and exported into a variety of other software packages for presentation purposes or complex statistical analysis.

Key Benefits of Safety Climate Tool

- Raises the profile of health and safety, engaging the workforce to talk about health and safety issues.
- Captures sensitive information as participants respond anonymously.
- Enables active management of health and safety, allowing companies to highlight both areas of concern and good practice.
- Provides a baseline measure to help you evaluate whether health and safety initiatives have had the desired effects on performance.

Cardinus Risk Management Limited

4th Floor,
3 East Grinstead House,
Wood Street, East Grinstead,
West Sussex
RH19 1UZ

107 Leadenhall Street
London
EC3A 4AF

Tel: 020 7469 0200 Email: info@cardinus.com Web: www.cardinus.com

Cardinus LLC

10 Flag Business Exchange,
Vicarage Farm Road,
Peterborough,
Cambridgeshire
PE1 5SL

325 E. Rolling Oaks Drive
STE 105
Thousand Oaks
CA 91361